

A scenic view of a lake with a grassy bank, trees, and a blue sky with clouds. The lake is in the foreground, with a wooden walkway along the grassy bank. In the background, there are trees and a building. The sky is blue with white clouds.

STEEL MAGNOLIAS

Audience Study Guide

PRODUCTION HISTORY



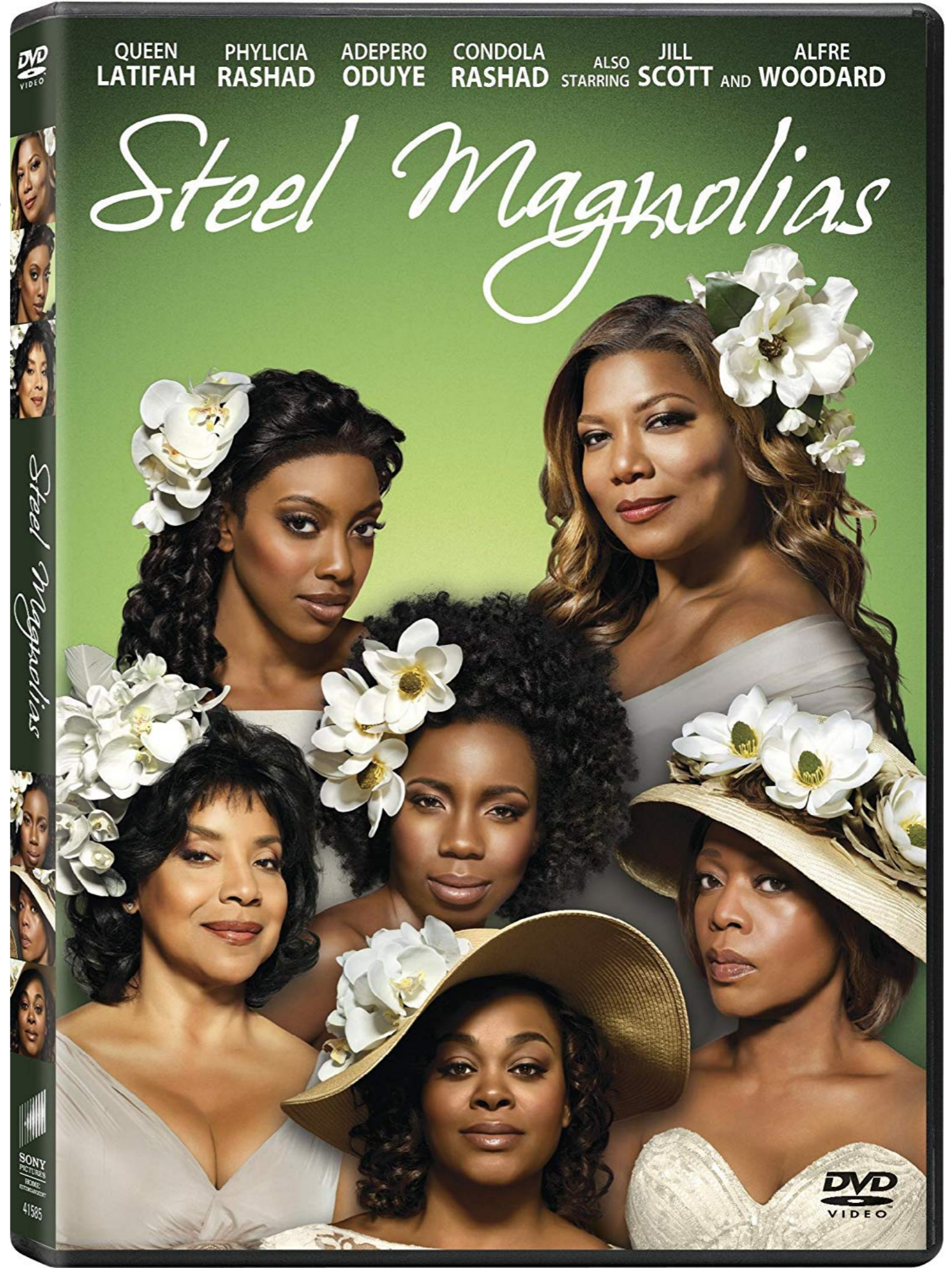
**Steel
Magnolias**

PRODUCTION HISTORY

- ❖ Originally presented Off-Broadway at the WPA Theatre in New York City on March 22, 1987.
- ❖ The play debuted on Broadway in 2005.
- ❖ It was adapted as a film released in 1989, starring Sally Field and Julia Roberts (nominated for an Academy Award for Best Supporting Actress).
- ❖ It was released again in 2012 as a “made for TV” film starring Queen Latifah.

THE PLAYWRIGHT

- ❖ Writer/Producer Robert Harling wrote the play in 10 days after the death of his sister, Susan, in 1985.
- ❖ He is also known for *The Evening Star* and *First Wives Club*.
- ❖ His plays & screenplays typically feature female leads and are set in the American deep south.
- ❖ His hometown was Natchitoches, Louisiana.



SETTING: LOUISIANA



SETTING: LOUISIANA

- ❖ The play is set in fictional Chinquapin Parish
- ❖ All scenes happen in Truvy's Beauty Shop
- ❖ It's the 1980s
- ❖ Traditional southern values and social cues
- ❖ All-female cast
- ❖ These ladies love to cook & swap recipes, like:
 - ❖ Crawfish
 - ❖ Crab Claws
 - ❖ Strawberry Pie

THE WOMEN

They love each other

tell one another the truth

care for one another's families

They survive hardships

They share their lives with one another...



...And they look good doing it!

“ Drum would never set foot in a beauty shop. This is women's territory.”

- M'Lynn

THE WOMEN



M'LYNN EATENTON

Mother of the Bride

Expecting a Promotion

Socialite

SHELBY EATENTON-LATCHERIE

The Bride

Prettiest Girl in Town

Diabetic



TRUVY JONES

Entrepreneur/ Beautician

Never lost a Client

Hopeless Romantic



ANNELLE DUPUY-DESOTO

New Girl with a Past

Beauty School Graduate

Quirky



OUISER BOUDREAUX

Dog Lover

Plant Lover

People Not so Much



CLAIREE BELCHER

Former Mayoress

Sports Enthusiast

Philanthropist

JOIN THE LADIES!

Join the ladies from Steel Magnolias by doing these Fun Activities

Get Your Colors Done

Good Hairstyles for Your Face Shape



THE LINGO

- ❖ *I would rather walk on my lips than...* = I would never...
- ❖ *Get a kick out of...* = to find something amusing
- ❖ *Bless his heart...* = to express sympathy for someone
- ❖ *Poet laureate* = a poet appointed to a British royal family
- ❖ *What melts my butter* = causes feelings of arousal
- ❖ *Gild the lily* = to improve what's already excellent
- ❖ *Doesn't know us from Adam's house cat* = we are strangers
- ❖ *You're ready to spit nails* = extremely angry

THE LINGO

- ❖ *Earping on your shoes* = disrespect; in this case vomiting
- ❖ *Rite du passage* = right of passage
- ❖ *Caught with tinsel around her knees* = caught with her pants down
- ❖ *Going to hell in a hand cart* = headed for inescapable disaster
- ❖ *The kind of girl...bring home to mama* = moral, respectable
- ❖ *Which side his bread was buttered on* = sexual orientation
- ❖ *It wouldn't hairlip you, you know* = A hairlip is a physical disability that impacts one's speech

'80s REFERENCES & MORE



'80s REFERENCES & MORE

- ❖ Jaclyn Smith: an American actress known for her role as Kelly on the show Charlie's Angels.
- ❖ Princess Grace: Grace Kelly was an American film actress who became Princess of Monaco
- ❖ Princess Di: Diana was the first wife of Charles, Prince of Wales
- ❖ Wayne Newton: a cabaret singer who made guest appearances on TV and was a successful Las Vegas entertainer
- ❖ Elizabeth Taylor: a British-American film and TV actress
- ❖ Call Waiting: first available in 1974, allowed the user to put the first call on hold and answer a second call. Before this, people would sit and wait by the phone or miss a call unknowingly

'80s REFERENCES & MORE

- ❖ Dago pie: pronounced [dey-goh], it is a meat pie
- ❖ Too colorful for words: no listing; a colorful person is thought of as unusual
- ❖ Type I Diabetes: a condition where the pancreas doesn't produce enough insulin. This condition has no cure and the cause is unknown. Over time Type I Diabetes can cause heart attack, kidney damage, blindness, miscarriage, stillbirth, birth defects, nerve damage, etc. Shelby likely had end-stage kidney disease, which is irreversible and is treated with dialysis or a kidney transplant.
- ❖ Red Door: Elizabeth Arden had a series of Red Door Spa retreat centers

HISTORIC DISTRICT



Rue **St. Denis** 100



WORKS CITED

- ❖ Country But I'm Confused
- ❖ Steel Magnolias the Play
- ❖ Robert Harling
- ❖ Steel Magnolias Characters
- ❖ Dictionary
- ❖ Ur nab Dictionary
- ❖ Wayword Radio
- ❖ Use English
- ❖ To Hell in a Handbasket

WORKS CITED

- ❖ Jaclyn Smith
- ❖ Grace Kelly
- ❖ Princess Diana
- ❖ Wayne Newton
- ❖ History of Red Front Doors
- ❖ Elizabeth Taylor
- ❖ Colorful character
- ❖ Type I Diabetes