

THE MIRACULOUS JOURNEY OF EDWARD TULANE

Study Guide by Aubrey Pearce



SYNOPSIS OF THE PLAY



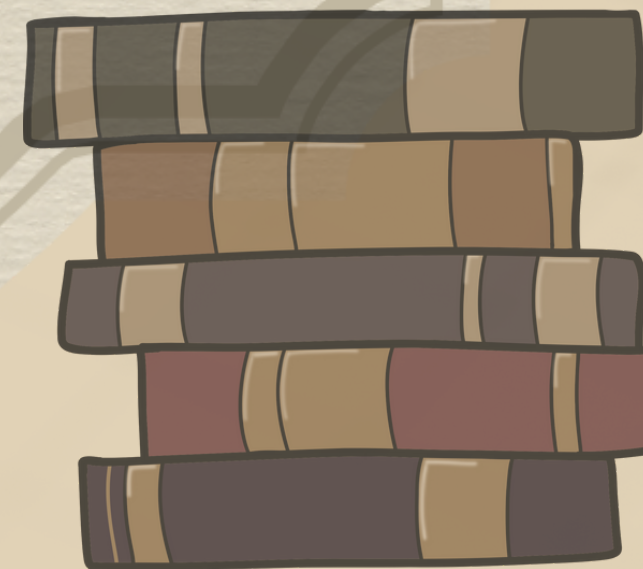
The Miraculous Journey of Edward Tulane is an 80-minute play based on the novel by Kate DiCamillo (2006). This heartwarming tale retells the story of Edward, a china toy rabbit, who is owned by ten-year-old Abilene. Although Abilene shows Edward immense love and care, he is self-centered and selfish. As Abilene's family is departing on a ship to London, Edward is flung overboard, and now lives in the world as a "lost toy." As the play digresses, Edward is scooped up from the ocean by a fisherman's net. Throughout his journey, he brings comfort to the fisherman's wife, meets the homeless while traveling alongside a hobo and his dog, helps a farmer, aids a little boy who is suffering while caring for his sick sister, and finally, is fixed in a toyshop where he meets an old doll. As Edward is brought into each of the character's stories, he is taught a valuable lesson: **what it means to truly love**. When Edward lost Abilene, it didn't take long for him to realize his lack of courage to love again. However, this courage is rebuilt through both the heartbreaks and many acts of kindness he is shown by strangers along his journey home. Edward discovers that *loving often means taking a risk, and fighting for those you care for.*

“

IF YOU HAVE NO INTENTION OF
LOVING OR BEING LOVED, THEN THE
WHOLE JOURNEY IS POINTLESS

Author Kate DiCamillo (*The Miraculous
Journey of Edward Tulane*)

”



EDWARD'S JOURNEY:

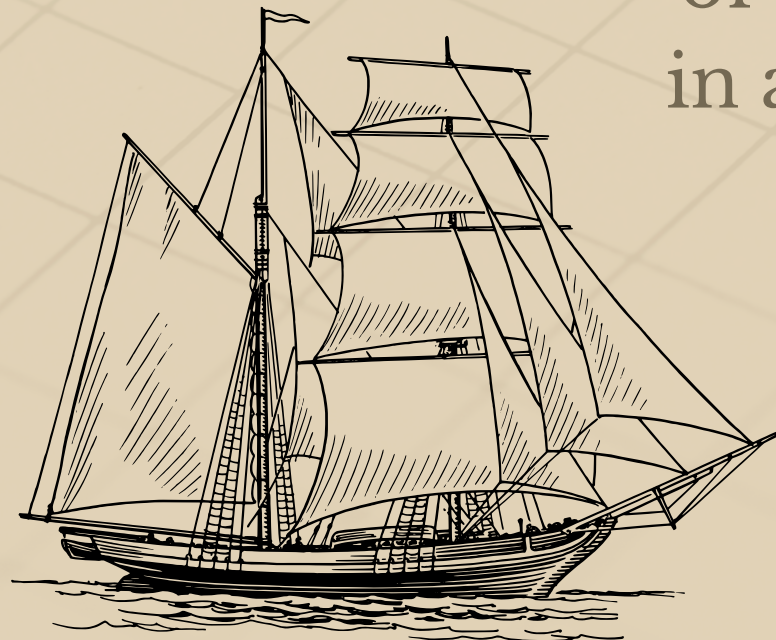
STARTS 1901

The play begins in Abilene's house on Egypt Street



1903

On the voyage, Edward is thrown overboard



1906

Edward finds himself in a fisherman's net



1909

Next, he is on top of a garbage pile in a hobo's camp



1911

Then, Edward is kicked off of the train



1913

He becomes a scarecrow



1917

Edward's head is broken into 21 pieces



1920

The shop doll convinces Edward to love



ENDS 1925

Abilene discovers Edward once again

OVERARCHING THEMES

1

Regaining the
courage to love
after loss

2

Self-discovery

3

The
resurrection
story in the
Bible

THEMES CONT.

First of all, the story of *Edward Tulane* is one of both **loss and love**. It is important to note that one cannot love anything or anyone without the fear of losing that object or person. This is what makes it all the more fragile - such as a china rabbit toy. The evidence of this theme is displayed through the character arc of Sarah Ruth, and how her brother (Bryce) cares for her even as she is dying. This touches Edward the most.

Secondly, *The Miraculous Journey of Edward Tulane* is just that: **a journey of self-discovery**. While the different characters love Edward in the many ways they know how, he notices that there isn't merely one way of loving.

And lastly, this is a perfect play to perform around the season of Easter because *Edward Tulane* is a representation of **the resurrection story in the Bible**. Several religious themes are painted throughout the book and play. For example, Lucius (the doll-maker) fixes Edward, implying that he has "risen from the dead" and is renewed.



MEET THE AUTHOR



kate dicamillo



WHAT SPARKED THIS STORY?

how it came to be...

Philadelphia, PA author **Kate DiCamillo** is known for her work as a children's author. She has written over 25 books and has sold over 37 million copies - one of them being *The Miraculous Journey of Edward Tulane*. Kate DiCamillo was inspired to create the story of *Edward Tulane* when she received a china rabbit doll as a gift. This sparked the rabbit's journey, and the book was officially published in 2006.

In the Chicago Tribune, DiCamillo said, "I initially thought it would be a picture book, but when I started writing, it just unfurled and wrote itself. The story told me; I didn't tell the story."



HOW IS THIS STORY A PLAY?

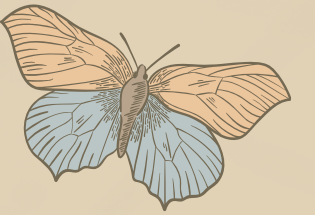
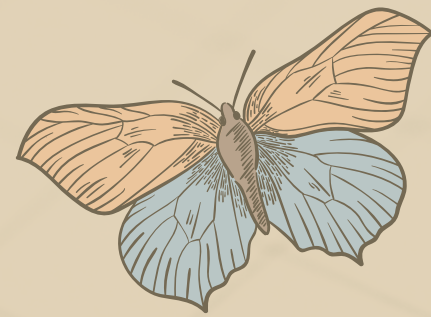
the man behind the scenes...

On the other hand, **Dwayne Hartford**, the playwright for *The Miraculous Journey of Edward Tulane* is from Phoenix, Arizona. He works as the playwright-in-residence at the Childsplay Theatre. Hartford received his BFA in musical theatre from the Boston Conservatory in 2000, and since he has written several plays that have toured across the U.S. and Canada.

dwayne hartford



BRIEF PRODUCTION HISTORY:



OCTOBER 2015

The stage adaptation of *The Miraculous Journey of Edward Tulane* was also performed at Ruth Page Center of the Arts in 2015. It starred Jessie Fisher, Melanie Brezill, Kelvin Roston Jr., and Patrick Budde.

OCTOBER 2013

Originally, *The Miraculous Journey of Edward Tulane* was developed, produced and also funded by the Childsplay Theatre in Tempe, Arizona. The play's first premiere was on October 26th, 2013.



The Miraculous Journey of Edward Tulane was originally commissioned by and produced at Childsplay (David P. Saar, artistic director; Steve Martin, managing director) in Tempe, Ariz. The play was developed in Childsplay's Whiteman New Plays Program and premiered on Oct. 26, 2013, at the Tempe Center for the Arts.

Cast:

The Traveler Katie McFadzen
The Musician Kyle Sorrell
The Man David J. Dickinson
The Woman Debra K. Stevens

Production staff:

Director David P. Saar
Dramaturgy Jenny Millinger
Scenic design Jeff Thomson
Costume design Addy Diaz
Lighting design Rick Paulsen
Sound design Christopher Neumeyer
Rabbit design and construction Jim Luther
Original music Kyle Sorrell
Stage manager Sarah G. Chanis

THE OFFICIAL
PLAYBILL FROM
CHILDSPLAY
THEATRE'S PREMIERE
OF EDWARD TULANE



GLOSSARY OF WORDS

Refined: Elegant and cultured in appearance, manner, or taste.

Farthfigery: A made up witch curse word, essentially meaning “disappointing” in the story.

Bon Voyage: Used to express good wishes to someone about to go on a journey.

Muck: Dirt, rubbish, or waste matter.

Churned: Move or cause to move about vigorously.

Daft: Silly; foolish.

Andromeda, Pegasus, Cassiopeia, Ursa Major: Different kinds of galaxies and constellations.

Vulgar: Lacking sophistication or good taste; unrefined.

Outlaw: A person who has broken the law, especially one who remains a fugitive.

Bedroll: A sleeping bag or other bedding rolled into a bundle.

Junction: A point where two or more things are joined.

Ferocious: Savagely fierce, cruel, or violent.

WORKS CITED

“Edward Tulane’s Timeline.” Timetoast Timelines, 1 Jan. 1901, www.timetoast.com/timelines/edward-tulanes-timeline.

“Kate DiCamillo.” Wikipedia, Wikimedia Foundation, 13 Jan. 2024, en.wikipedia.org/wiki/Kate_DiCamillo.

“Kate Dicamillo’s Allegory of Christian Faith and Resurrection, ‘The Miraculous Journey of Edward to Tulane,’ with a Key to Its Biblical Parallels.” One, 1 Aug. 2009, oneminutebookreviews.wordpress.com/2009/07/31/kate-dicamillos-allegory-of-christian-faith-and-resurrection-the-miraculous-journey-of-edward-to-tulane-with-a-key-to-its-biblical-parallels/.

“Kate DiCamillo’s ‘Edward Tulane’ Adapted for the Stage.” Childrens Book Council, www.cbcbooks.org/2015/10/16/kate-dicamillos-edward-tulane-adapted-for-the-stage/. Accessed 6 Feb. 2024.

“The Miraculous Journey of Edward Tulane.” Dramatic Publishing, www.dramaticpublishing.com/the-miraculous-journey-of-edward-tulane. Accessed 6 Feb. 2024.

“The Miraculous Journey of Edward Tulane.” Kate DiCamillo, www.katedicamillo.com/novels/edward_tulane/. Accessed 6 Feb. 2024.

CREDITS

This presentation template was created by Canva.